



news

APPRA exists to help retain the unique character of the Avenues and Pearson Park conservation area and to support the neighbourhood's strong community spirit

December 2013 Issue 48

CHAIR'S REPORT

Stephanie Wilson MBE

We are contemplating the possibility—emphasised by the more social-media-adept on the Committee—that our reliance on a newsletter is out-moded and that a lively and relevant exchange of views happens more easily on, say, Facebook these days.

It seems to me that we don't have to choose one or the other; as with real books and Kindles, we can continue to use both, with the advantages of both. I myself—not one for Facebook, though I am accessible, like the rest of the committee, on the 'phone and by email, both of which are frequently used by residents to contact me—think that our newsletter must continue as our main form of 'outreach,' since we are sure that it arrives in every Avenues household;

if residents then choose not to read it, that is up to them.

At a recent Planning Committee, I first amused them all, then annoyed them—speaking about different applications in Pearson Park. Mr Codd, the City Planning Manager, came to talk to us recently about, for instance, the Local Plan, the impact of the Article 4 Directions on our Conservation Area and government changes to permitted development rights.

When we asked him what he would like from us, he replied that he would like us to be less negative in response to planning applications. As I was at the Planning Committee to speak against the proposed development of the Pearson Park Hotel as a house in (extremely)

continued on page 2

Your guide to our thirteenth AVENUES ADVENT CALENDAR



DECEMBER 2013

1 200 Westbourne	2 16 Pearson Park	3 113 Westbourne	4 43 Richmond
5 55 Marlborough	6 18 Park	7 87 Victoria	8 119 Westbourne
9 9 Victoria	10 10 Park	11 218 Westbourne	12 120 Victoria
13 119 Victoria	14 92 Victoria	15 89 Victoria	16 72 Westbourne
17 244 Marlborough	18 127 Victoria	19 199 Park	20 178 Marlborough
21 206 Park	22 222 Marlborough	23 55 Pearson Park	24 6 Victoria

See the windows online at www.avenuesonline.org.uk

Our thanks to all participants, and to Lesley Longworth who organises this event

Christmas in the Avenues

- ◆ **Green Fair.** (*Hull Friends of the Earth*): Saturday, 7 December, 10.30-3. Spring Bank Community Centre. Popular vegetarian café by *Timebank*. Stalls include *Friends of Pearson Park*.
- ◆ **Pearson Park Christmas Celebration:** Saturday, 7 December, 12-5, outside the Conservatory. Carol singing by Hull Music Centre 3.30-4.40pm. Christmas lights switched on at 4pm, by Chair of Trustees. Hot food, children's rides.
- ◆ **APPRA carol singing:** collecting for the teenage cancer ward at Castle Hill hospital. Singers (and collectors) meet on Friday, 20 December, at 5.45pm at the Park Avenue fountain.



To find us on Twitter, search for @APPRAHull
Tweet us to tell us you are an Avenues resident and we will follow you back.



Like APPRA on Facebook
To find us on Facebook, login to Facebook and search for "APPRA", then "like" our page.



Scan the code to reach APPRA's website—see Advent Windows, our craftsmen list and other resources

www.avenuesonline.org.uk

Victoria fountain

Join our campaign for a working fountain in Victoria Avenue, see what we're doing and how far we've come:

<http://victoriafountain.org/>

Victoria Fountain Charity Auction

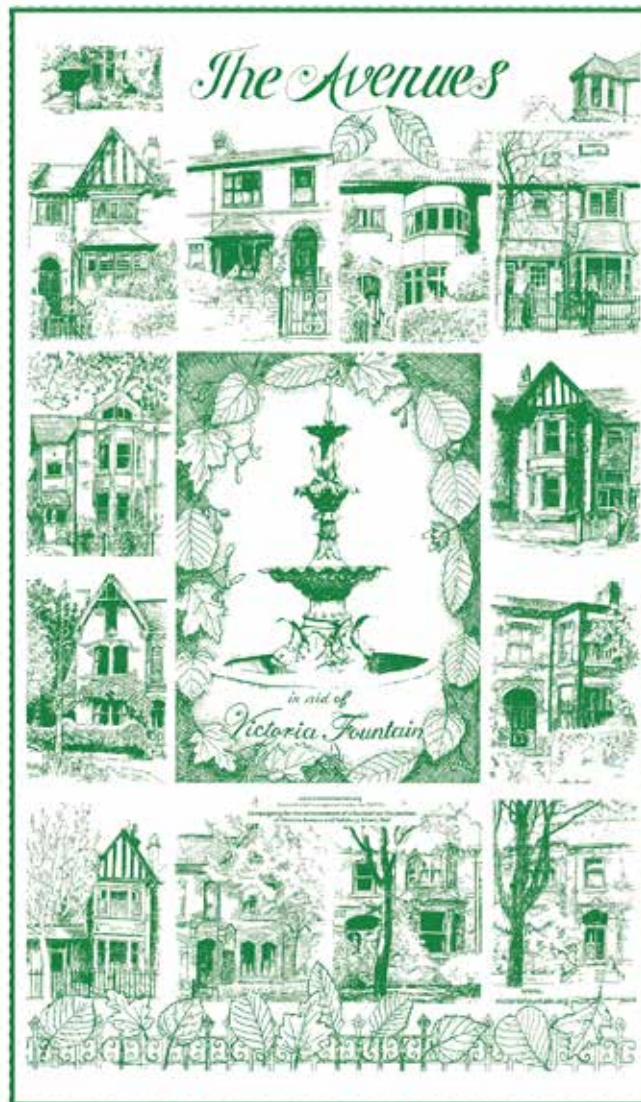
The auction at Larkin's on Newland Avenue was a great success with over £2,000 raised. John Mann, the auctioneer, encouraged bids for over 70 items, which included original artworks donated by local artists, and goods and vouchers from businesses on Newland and Chanterlands Avenues. The Avenues quilt did not reach its reserve price on the night but has since been bought by an Avenues resident. Wonderful—it is still in our area!

Avenues Tea Towels

Are you looking for an unusual, distinctive Christmas present for friends or family? The fountain group has now created Avenues tea towels (right) illustrating the wonderful and varied architecture in our area. These houses border a central image which shows the fountain which the group plan to reinstate.

The tea towels are large, of good-quality white cotton, and available in forest green, sepia or purple. They cost £5 each and can be obtained from Ella at 96 Victoria Avenue or Jacky at 92 Victoria Avenue.

Jacky Ward Lomax & Ella Suto



continued from page 1

multiple occupation (32 bedsits), I could only apologise; in our defence, I adapted the message to drivers, 'APPRA welcomes considerate plans.'

Many of the applications by developers consider neither the potential residents nor the existing neighbours, let alone the Conservation Area. Recently, there has been an unprecedented number of applications to develop houses in the Park: 48, 49, 50/51, 54, 55, 70-72 (the former hotel), with 17 & 18 pending (and 22 needing attention, having been boarded up for years). These are all, in their different ways, notable houses which deserve considerate treatment and attention to the architecture which is an essential contribution to the grand curtilage of the Park.

As to the irritation I unwittingly generated, we are still pursuing the issue. I noticed, in the papers for the Planning Committee, a last minute submission by an applicant, making a claim I thought was wrong; as we had not seen it, we could not argue against it—not very democratic, I thought and the APPRA Committee agrees. We have taken it up with one of our Ward Councillors.

See you, one way or another, at the carol-singing evening!

SW

INVITATION
TO AN OPEN MORNING
AT 50 PEARSON PARK
ON SATURDAY
7 DECEMBER
10 - 12 AM

The new owner of 50 Pearson Park (Grade II Listed Building) is holding an Open Morning for anyone to view the interior of the house.

He has told the APPRA committee that he has taken note of the objections and petition against his planning application. He is in dialogue with both the Planning Department, Conservation Officer, and Building Regulations Department, with a view to submitting a revised application:

one which will give consideration to the retention of internal architectural features.

He is interested in meeting objectors and other residents, to hear their opinions as he shows them around.

Even if you did not write an objection, this house is worth seeing, although it suffered depredations during its former use by Hull City Council. Some superb ceilings and friezes, we are told.

PLANNING MATTERS

Contact the Planning Department Tel: 612345 Email: dev.control@hullcc.gov.uk



Planning permission is required for alterations to or construction of the following, as they are protected features under Article 4 Directions:

- ◆ windows;
- ◆ front doors;
- ◆ chimneys, including chimney pots;
- ◆ roofs—both for roofing materials and for the installation of solar panels;
- ◆ eaves gutters, gutter blocks/brackets, fascia boards and barge-boards;
- ◆ construction of a porch or alterations to an existing porch;
- ◆ construction of a vehicular driveway across a pavement or verge.

The Article 4 Direction applies only to the elevation of the house which faces a public highway, except

for roofs and chimneys which include the front and backs of houses.

There is no fee for a planning application arising from an Article 4 Direction.

It's best to enquire of the Planning Department at the time you are thinking of renovating or making alterations, and definitely before the work starts. They give valuable advice on what is acceptable in our conservation area—making the process easier for you.

Also subject to planning permission are **satellite dishes** (national guidelines for Conservation Areas) and the **felling/pruning of trees** (where the trunk circumference is more than 24 cm).

HELP@HAND

CRAFTS LIST ONLINE

AvenuesOnline has APPRA's updated list of recommended local firms with the skills and willingness to carry out conservation-minded repairs and renovation.

www.avenuesonline.org.uk/wp/conservation/architecture/

HERITAGE REPAIRS ADVICE

If you wish for advice on repair and renovation using traditional materials and styling, email **Ed Ulliyart** and he will help, or find a "man who can". His email is ed@allstar.karoo.co.uk

Craftsmanship is alive and well in Hull

THE TOWNSCAPE HERITAGE INITIATIVE IN BOULEVARD AND COLTMAN STREET CAME TO AN END IN MAY AFTER 6 YEARS OF REPAIRING AND RESTORING BUILDINGS IN THESE TWO CONSERVATION AREAS. ONE OF THE PLEASURES OF ADVISING ON THE CONSERVATION ASPECTS OF THIS PROJECT HAS BEEN DISCOVERING THAT HULL STILL HAS THE LOCAL SKILLS AVAILABLE TO REINSTATE DECORATIVE FEATURES.



Finials

As Ivan and Elizabeth Hall's book *Georgian Hull* (Sessions of York 1978/9; a book still well worth tracking down) reminds us, Hull craftspeople have always made good use of timber, the town being a timber importing port and having the joinery skills associated with ship building. That is why so many of our older houses have decorative timber features: **bargeboards, finials, gutter blocks, bay windows, doors and door surrounds**. Local firms can repair these items, or reinstate them if they are missing. If features are missing, old photographs or a careful look at neighbouring houses of a similar design might give you an idea what they looked like, but make

sure you really are looking at a similar design of house!

As we know, **timber sliding sash windows** can be overhauled, repaired and draughtproofed, and if yours are the originals it is well worth doing this because the quality of the timber will probably be better than can be obtained today. However, if they really do need to be replaced, our joinery firms can make new sashes to match. If you want double glazing but the original design won't take normal double glazed units there is a special slim version available ('Slimlite' and 'Timberlite' are two tradenames.) Some people like to keep the slightly wavy appearance of the original glass, however.

We can also get **replicas of iron railings**, and don't they make a difference to the appearance of the street frontage! Today they will usually be in steel, but they can still be solid looking and robust and if you can find out what the original tops looked like they can usually be reproduced. Not all our houses had iron railings though; the 'arts and crafts' designed houses probably had wooden fencing.

If you are lucky enough to have **stone details**, you will be relieved to hear that we haven't quite lost all our local stonemasons with the sad demise of Quibell's. **Matching bricks** and brick 'specials' can be obtained too.

Unfortunately, there are no grants available to help with the cost of these works, but estate agents tell us that 'original features' are a good selling point.



Bargeboards and windows

ALL PHOTOS: Hilary Byers



Reproducing window details



Railings and gates

Boulevard and Coltman Street have now joined us in having 'Article 4 Directions', meaning householders need planning permission to make changes to windows, bays, porches and doors. And we've been recommending to residents the benefits of having an active Residents' Association!

Many thanks to Avenues locals Ian Colquhoun, Sally Walker and Philip Heselton who have helped to advise the St Andrews Townscape Heritage Initiative through the Steering Group.

I can supply lists of the firms who have carried out works of repair and restoration.

Hilary Byers, Heritage Conservation

01482 445747

hilary@amskaya.karoo.co.uk



Keep in touch with APPRA's social media

Our newsletter is printed only 3 times a year—but you can find up to date information on our social media pages, and interact with other residents.

Think you would never use **Facebook** or **Twitter** after all the bad press they receive? You might be surprised how useful they are to keep you up to date and **how simple it is to create high personal privacy settings**. Whilst we would not want to stop delivering printed newsletters, they can never circulate "the latest news" unless they are... daily! If you post a query or notice something residents need warning about, on our **Facebook** or **Twitter** pages, you will usually receive an answer that day.

Local news/events can also be found thro links on our Facebook page to other local groups—Avenues Bicycle Project, Open Gardens, Victoria Fountain Fund, Newland Avenue, Prince's Avenue, Ella Street, Tenfoot City, Adelphi Club, Neighbourhood Network ...

Lesley Longworth

AVENUES PICTURE QUIZ II

Chris Coulson

What? Where? When?

The answers will be published in the April 2014 issue.



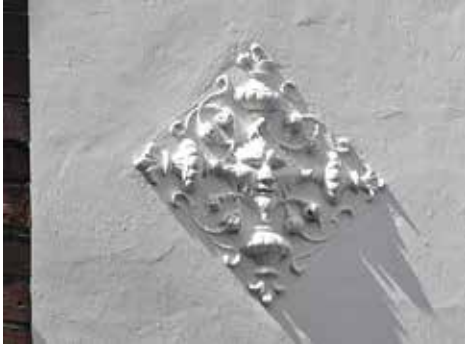
1...Where is this (but don't get drunk)?



2... Where is this house?



3 ... What? Where? When?



4... Decoration. Where is it?



5... You won't get wet now. Where?



6... What was it called originally?



7... Which avenue is on the left?



8... Where, and what year?



9... Where bombs fell - name the 4 sites

ANSWERS TO AVENUES PICTURE QUIZ I

(in September issue)

- The back of where?** The back of 3/5 Salisbury Street. Gilbert Scott Jr, Queen Anne Revival style houses.
- Where are these railings?** Original Victorian railings between 122 and 120 Westbourne Avenue. The railings in the Avenues were removed for the WWII Effort but were never used and dumped at sea as they were the 'wrong type of metal'!
- What was the previous name?** Danevang. 34 Marlborough. This curious name seems to relate to a 'Danish settlement/village'. In 1901 the two maids were from Scandinavia. Vrede (the name now) is a town in South Africa about 200 km south east of Johannesburg.

- What was its name?** Cottingham Drain though originally probably Setting Dyke. Large concrete pipes were laid in it in the mid-sixties and it was covered over. Beyond Princes Avenue to the West it joined Setting Dyke. Both are classified as agricultural drains.
- Where is it? What does it mean?** 'NSF Static Water'. This unusual sign from WWII is on the Salisbury Street fence of 105 Park Avenue. NFS was the National Fire Service and Static Water was a circular water tank available to firemen. I was told by a Civil Defence Warden that this was on the corner by the 'Nuffield'. I thought there was an arrow below the writing but can't find my photo of it!
- Where and when?** Floods of June 2007. Taken from 39 Victoria Avenue, looking north west across the Avenue.

- Where's this curious corner?** This building is in the tenfoot behind number 4 Park Avenue. It can be seen from Park Avenue. The corner presumably allows the passage of vehicles without the building being damaged. It looks original.
- Who lived here?** Amy Johnson CBE (1903-41) was brought up here. Pioneer aviator who in 1930 was the first woman to fly from the UK to Australia. She was drowned after she crashed into the Thames in January 1941. A statue of her stands outside the Prospect Centre.
- Who retired?** After 51 years Trevor Norman (right) retired from the butchers shop on Princes Avenue. Craig Kipling (left) taking over on 3 September 2012. The shop is thought to be the oldest continuous trade shop on Princes Avenue.

APPRA Contacts

	Tel	Email	Post	
Chair	Stephanie Wilson	493037	chair@avenuesonline.org.uk	48 Marlborough Avenue HU5 3JS
Secretary	Adrian Crummay	445272	secretary@avenuesonline.org.uk	66 Westbourne Avenue HU5 3HS
Verges	Sally Walker	447558	sallywalker214@googlemail.com	214 Westbourne Avenue HU5 3JB
APPRA online	www.avenuesonline.org.uk			Our Craftsmen List is at http://www.avenuesonline.org.uk/wp/conservation/architecture/